



In Love with the shape of U

IN LOVE WITH THE SHAPE OF YOU



Co-funded by the
Erasmus+ Programme
of the European Union

Programme Erasmus +

Key Action: Partnership for cooperation and exchanges of practices

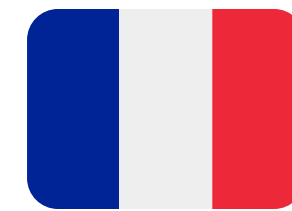
Action Type: Small-scale partnership in adult education

Project Reference: 2021-1-IT02-KA210-ADU-000034912

LEAD PARTNER



LILLE, FRANCIA



24TH JUNE 2023

TIME 10H-16H



Venue: to be defined





PARTICIPANTS

- 5 participants from each partner.
- Participants profile: activists, members, volunteers, trainers interested in the topic of the project.

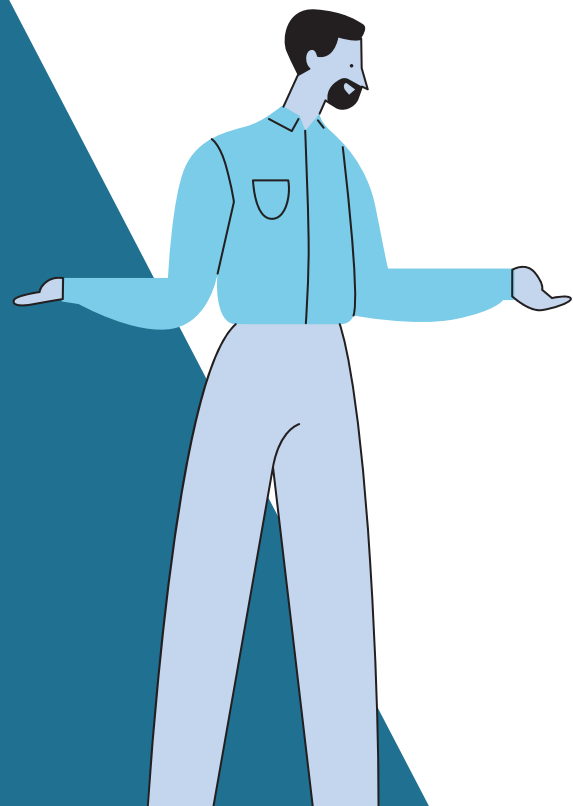
SUMMARY

GENERAL OBJECTIVE:

This project aims to launch a common strategy to tackle the obesity and disordered eating of EU citizens.

SPECIFIC OBJECTIVES:

- 1.to analyse the association between obesity and social exclusion in psychological terms
- 2.to promote healthy eating habits
- 3.to offer a training for volunteers of the direct target for physical exercises, psychological and healthy matters



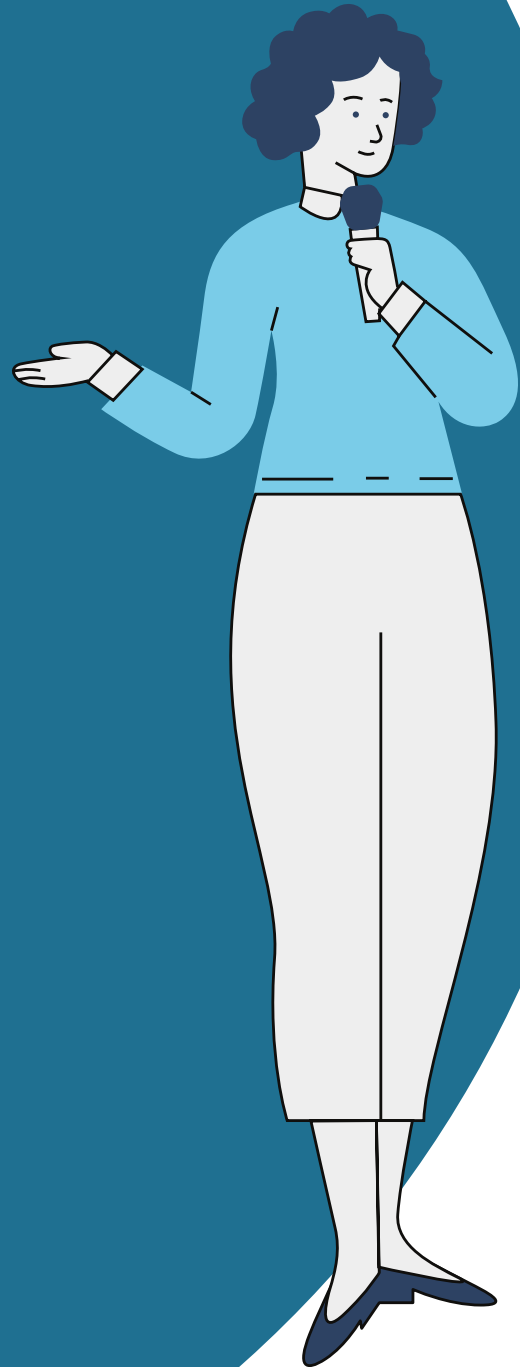
ECONOMIC RULES

For this Transnational Meeting EACH PARTNER GROUP will organize its own trip in autonomy and independently. Accommodations reservation, Food, Transports will be organized and managed by individual participants / groups. The coordinator will not be responsible for your stay in the Venue. All expenses will be paid in advance by the participants. The coordinator will reimburse the costs by bank transfer after the delivery of the supporting documentation.

Budget limit **575€** for participant

To proceed with the payment request, please complete this e-form within 10 days of the transnational meeting.

<https://form.jotforme.com/91784879424373>



REIMBURSEMENT

- Reimbursement must be based on the basis of actual costs (reimbursement of receipts). Costs may be claimed only for journeys directly connected to specific and clearly identifiable project related activities.
- Costs for subsistence (cost of accommodation, meals, local travel within the place of mission and sundry expenses) are eligible up to the actual amount spent. It is thus very important to keep all supporting documents. These may be requested by the Agency before making the final payment but should be kept available in any case for a possible ex post audit/control.
- To be considered eligible, these costs must be reasonable, conform to local prices and be exclusively linked to the project. Lost, fake or incomplete documentation will NOT be reimbursed

CONTACT PROJECT COORDINATOR

Luca Bellino +393428041055



OFFICIAL EMAIL

loveshape.adu@gmail.com

